

**FINANCE AND ADMINISTRATION CABINET
2011 CASE FOR GIVING**

2011 KENTUCKY EMPLOYEES CHARITABLE CAMPAIGN

What is the KECC?

The Kentucky Employees Charitable Campaign (KECC) is a partnership of Kentucky state employees and six accredited state-wide charities, who together work to make a significant difference in the lives of our families, friends and neighbors throughout the Commonwealth.

Since 1993, the KECC has provided the opportunity for state employees to contribute to eligible charitable organizations through the state's payroll deduction process. This is YOUR campaign, created and run by state employees, and in 2009, you raised more than \$1.4 million to help build a better Kentucky!

Why the six charities?

The six charities undergo rigorous scrutiny by the Personnel Cabinet and have met stringent guidelines. They are organizations with a statewide presence, helping people in every community across the Commonwealth.

The KECC charities represent over a thousand charitable programs, addressing a broad range of health and human service issues across the Commonwealth. The charities directly address child abuse, basic needs and services, senior assistance, health care, research, and so much more.

Who benefits?

KECC charities provide services to help meet the educational, health and basic needs of persons of all ages, in communities all across Kentucky. Over the years, many state employees have stepped forward to share their own KECC story--how the KECC charities have directly affected their lives. These charities service such a broad range of individuals and families, that almost everyone knows someone who has been helped by through our support. That is why it is critical that we continue to support the efforts of these agencies through the campaign.

Through a modest payroll deduction, a commitment to helping others will ensure that our friends and neighbors - and all Kentucky families - will continue to have the opportunity to live stable, healthy lives, even during tough times.



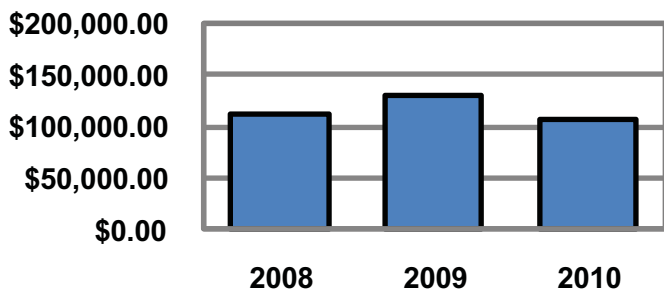
2009-2010 Comparison by Cabinet

Cabinet	2009						2010						One Year Change					
	# Empls	# Givers	\$ Raised	% Part.	Per Capita	#	# Empls	# Givers	\$ Raised	% Part.	Per Capita	#	% Part.	Per Capita	\$ Raised	% Increase		
Governor	1,518	407	\$66,574	26.8%	\$43.86	1,511	301	\$64,730	19.9%	\$42.84	(106)	-6.9%	(\$1.02)	(\$1,844)	-2.8%			
Energy & Environment	1,724	494	\$70,675	28.7%	\$40.99	1,781	395	\$63,052	22.2%	\$35.40	(99)	-6.5%	(\$5.59)	(\$7,623)	-10.8%			
Transportation	4,648	1,879	\$206,858	40.4%	\$44.50	4,933	1,460	\$154,132	29.6%	\$31.25	(419)	-10.8%	(\$13.26)	(\$52,725)	-25.5%			
Tourism, Arts & Heritage	2,138	670	\$101,774	31.3%	\$47.60	2,150	357	\$64,483	16.6%	\$29.99	(313)	-14.7%	(\$17.61)	(\$37,291)	-36.6%			
Education & Workforce Dev.	3,157	788	\$113,611	25.0%	\$35.99	3,268	625	\$93,018	19.1%	\$28.46	(163)	-5.9%	(\$7.52)	(\$20,592)	-18.1%			
Finance & Administration	4,311	768	\$131,215	17.8%	\$30.44	4,495	663	\$107,207	15.0%	\$23.85	(105)	-2.8%	(\$6.59)	(\$24,008)	-18.3%			
Health & Family Services	7,271	1,530	\$204,618	21.0%	\$28.14	7,549	1,088	\$149,642	14.4%	\$19.82	(442)	-6.6%	(\$8.32)	(\$54,976)	-26.9%			
Justice & Public Safety	7,943	1,639	\$197,717	20.6%	\$24.89	7,977	1,072	\$137,698	13.4%	\$17.26	(567)	-7.2%	(\$7.63)	(\$60,019)	-30.4%			
Judicial Branch	3,613	150	\$26,950	4.2%	\$7.46	3,629	121	\$26,917	3.3%	\$7.42	(29)	-0.9%	(\$0.04)	(\$33)	-0.1%			
Unified Prosecutorial	663	41	\$8,543	6.2%	\$12.89	1,137	48	\$7,668	4.2%	\$6.74	7	-2.0%	(\$6.14)	(\$875)	-10.2%			
Total Large	36,986	8,366	\$1,128,535	22.6%	\$30.51	38,430	6,130	\$868,547	16.0%	\$22.60	(2,236)	-6.7%	(\$7.91)	-\$259,988	-23.0%			
Secretary of State	76	49	\$12,230	64.5%	\$160.92	73	72	\$10,956	98.6%	\$150.09	23	34.1%	(\$10.83)	(\$1,274)	-10.4%			
Auditor of Public Accounts	132	64	\$17,454	48.5%	\$132.23	130	76	\$18,699	58.5%	\$143.84	12	10.0%	\$11.61	\$1,244	7.1%			
Economic Development	113	65	\$12,118	57.5%	\$107.24	105	67	\$11,295	63.8%	\$107.57	2	6.3%	\$0.33	(\$823)	-6.8%			
Personnel	229	140	\$28,716	61.1%	\$125.40	230	129	\$23,752	56.1%	\$103.27	(11)	-5.0%	(\$22.13)	(\$4,964)	-17.3%			
Treasury	32	8	\$1,392	25.0%	\$43.50	26	15	\$2,506	57.7%	\$96.38	7	32.7%	\$62.88	\$1,114	80.0%			
Public Protection	720	334	\$53,610	46.4%	\$74.46	731	291	\$68,990	39.8%	\$94.38	(43)	-6.6%	\$19.92	\$15,380	28.7%			
Military Affairs	648	339	\$35,429	52.3%	\$54.67	526	380	\$41,684	72.2%	\$79.25	41	19.9%	\$24.57	\$6,255	17.7%			
KY Housing Corporation	301	249	\$25,795	82.7%	\$85.70	320	251	\$22,383	78.4%	\$69.95	2	-4.3%	(\$15.75)	(\$3,412)	-13.2%			
Attorney General	215	74	\$17,839	34.4%	\$82.97	224	65	\$14,717	29.0%	\$65.70	(9)	-5.4%	(\$17.27)	(\$3,122)	-17.5%			
Labor	452	153	\$28,379	33.8%	\$62.78	466	162	\$29,902	34.8%	\$64.17	9	1.0%	\$1.38	\$1,523	5.4%			
KY Retirement System	251	64	\$13,594	25.5%	\$54.16	250	82	\$15,743	32.8%	\$62.97	18	7.3%	\$8.81	\$2,149	15.8%			
Agriculture	299	79	\$17,686	26.4%	\$59.15	296	64	\$13,057	21.6%	\$44.11	(15)	-4.8%	(\$15.04)	(\$4,629)	-26.2%			
Human Rights Commission	38	16	\$3,609	42.1%	\$94.97	38	4	\$1,330	10.5%	\$35.00	(12)	-31.6%	(\$59.97)	(\$2,279)	-63.1%			
Legislative Branch	391	44	\$19,551	11.3%	\$50.00	753	37	\$17,353	4.9%	\$23.05	(7)	-6.4%	(\$26.96)	(\$2,198)	-11.2%			
Total Small	3,897	1,678	\$287,402	43.1%	\$73.75	4,168	1,695	\$292,367	40.7%	\$70.15	17	-2.4%	(\$3.60)	\$4,965	1.7%			
	40,883	10,044	\$1,415,937	24.6%	\$34.63	42,598	7,825	\$1,160,914	18.4%	\$27.25	(2,219)	-6.2%	(\$7.38)	-\$255,023	-18.0%			

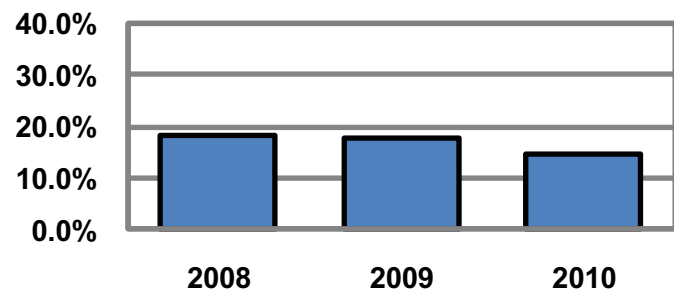
Three Year Comparative Results

FINANCE & ADMINISTRATION	2008	2009	2010
Total Gift	\$111,466.50	\$131,214.77	\$107,206.57
# of Employees	4,313	4,311	4,495
# of Givers	776	768	663
% Participation	18.0%	17.8%	14.7%
Per Capita Gift	\$25.84	\$30.44	\$23.85
# Leadership Givers	34	75	26

Amount Raised



% Participation



Summary by Department

OFFICE OF THE SECRETARY

	2009	2010
Total Gift	\$26,626.41	\$10,488.86
# of Employees	141	147
# of Givers	65	38
% Participation	46.1%	25.9%
Per Capita Gift	\$188.84	\$71.35
# of Leadership Givers	12	6

COMMONWEALTH OFFICE OF TECHNOLOGY

	2009	2010
Total Gift	\$20,402.00	\$8,085.00
# of Employees	360	370
# of Givers	104	42
% Participation	28.9%	11.4%
Per Capita Gift	\$56.67	\$21.85
# of Leadership Givers	11	1

OFFICE OF THE CONTROLLER

	2009	2010
Total Gift	\$8,891.00	\$5,967.92
# of Employees	86	86
# of Givers	40	22
% Participation	46.5%	25.6%
Per Capita Gift	\$103.38	\$69.39
# of Leadership Givers	7	4

DEPT FOR FACILITIES & SUPPORT SERVICES

	2009	2010
Total Gift	\$11,190.96	\$17,947.77
# of Employees	300	325
# of Givers	62	46
% Participation	20.7%	14.2%
Per Capita Gift	\$37.30	\$55.22
# of Leadership Givers	9	1

HIGHER EDUCATION ASSISTANCE AUTHORITY

	2009	2010
Total Gift	\$1,368.00	\$1,626.00
# of Employees	91	85
# of Givers	8	9
% Participation	8.8%	10.6%
Per Capita Gift	\$15.03	\$19.13
# of Leadership Givers	1	1

OFFICE OF THE PVA'S

	2009	2010
Total Gift	\$9,850.00	\$9,293.00
# of Employees	787	799
# of Givers	73	75
% Participation	9.3%	9.4%
Per Capita Gift	\$12.52	\$11.63
# of Leadership Givers	5	3

Giving Analysis

FINANCE & ADMINISTRATION 2010

LEADERSHIP GIVING (1% of Pay)

Total Leadership Pledges	\$17,663
Number of Leadership Givers	26
Average Leadership Gift	\$679.36
% of Total Givers	3.9%
% of Employee Campaign Total	16.5%

SPECIAL EVENTS

Total Special Event Dollars	\$16,985
Number of Events	33
% of Total Campaign	15.8%

NON-LEADERSHIP PAYROLL DEDUCTION GIVING

Total Dollars	\$69,414
Number of Givers	538
Average Payroll Deduction Gift	\$129.02
% of Total Campaign	64.7%

CASH OR CHECK

Total Dollars	\$3,144
Number of Givers	66
Average Cash/Check Gift	\$47.64
% of Total Campaign	2.9%

Highlights:

- 2010 saw significant declines in Finance and Administration - 105 fewer givers, including 49 fewer leadership givers, falling to the lowest level of giving since 2007.
- The Commonwealth Office of Technology and the Office of the Secretary both showed considerable losses - 85% of the total lost givers and a pledge reduction higher than the total campaign reduction.
- Key focus areas for 2011 will include re-engaging the 105 lapsed givers and asking former leadership givers to consider returning to that level of commitment.

Strategies to increase participation:

- Hold and promote group meetings
- Provide incentives linked to increased participation
- Conduct educational events

Strategies to increase average gift:

- Emphasize Leadership Giving Program
- Provide incentives linked to increasing gift size
- Encourage payroll deduction as best way to give

DEPARTMENT OF REVENUE

	2009	2010
Total Gift	\$31,824.40	\$30,818.02
# of Employees	828	943
# of Givers	221	233
% Participation	26.7%	24.7%
Per Capita Gift	\$38.44	\$32.68
# of Leadership Givers	28	10

CLERKS & SHERIFFS

	2009	2010
Total Gift	\$20,606.00	\$19,956.00
# of Employees	1,622	1,643
# of Givers	192	187
% Participation	11.8%	11.4%
Per Capita Gift	\$12.70	\$12.15
# of Leadership Givers	2	0

MISCELLANEOUS

	2009	2010
Total Gift	\$456.00	\$3,024.00
# of Employees	96	97
# of Givers	3	11
% Participation	3.1%	11.3%
Per Capita Gift	\$4.75	\$31.18
# of Leadership Givers	0	0

Results by Paycode

OFFICE OF THE SECRETARY

Office of the Secretary

	2009	2010
Total Gift	\$12,233.65	\$3,701.86
# of Employees	5	5
# of Givers	10	13
% Participation	200.0%	260.0%
Per Capita Gift	\$2,446.73	\$740.37
# of Leadership Givers	3	2

Office of Equal Employment Opportunity Contract

	2009	2010
Total Gift	\$960.00	\$768.00
# of Employees	4	5
# of Givers	3	2
% Participation	75.0%	40.0%
Per Capita Gift	\$240.00	\$153.60
# of Leadership Givers	1	1

Office of Policy and Audit

	2009	2010
Total Gift	\$1,752.00	\$624.00
# of Employees	11	13
# of Givers	7	3
% Participation	63.6%	23.1%
Per Capita Gift	\$159.27	\$48.00
# of Leadership Givers	1	0

OFFICE OF THE CONTROLLER

Office of the Controller

	2009	2010
Total Gift	\$3,922.00	\$2,054.92
# of Employees	31	30
# of Givers	14	7
% Participation	45.2%	23.3%
Per Capita Gift	\$126.52	\$68.50
# of Leadership Givers	4	2

Office of Procurement Services

	2009	2010
Total Gift	\$1,825.00	\$1,201.00
# of Employees	19	18
# of Givers	12	7
% Participation	63.2%	38.9%
Per Capita Gift	\$96.05	\$66.72
# of Leadership Givers	0	0

Office of Administrative Services

	2009	2010
Total Gift	\$7,772.60	\$2,563.00
# of Employees	101	99
# of Givers	37	13
% Participation	36.6%	13.1%
Per Capita Gift	\$76.96	\$25.89
# of Leadership Givers	5	1

Office of Legal and Legislative Services

	2009	2010
Total Gift	\$2,444.16	\$1,032.00
# of Employees	17	21
# of Givers	5	3
% Participation	29.4%	14.3%
Per Capita Gift	\$143.77	\$49.14
# of Leadership Givers	1	1

Office of Public Information

	2009	2010
Total Gift	\$1,464.00	\$1,800.00
# of Employees	3	4
# of Givers	3	4
% Participation	100.0%	100.0%
Per Capita Gift	\$488.00	\$450.00
# of Leadership Givers	1	1

Office of Financial Management

	2009	2010
Total Gift	\$2,308.00	\$2,592.00
# of Employees	17	17
# of Givers	8	6
% Participation	47.1%	35.3%
Per Capita Gift	\$135.76	\$152.47
# of Leadership Givers	2	2

Office of Statewide Accounting Services

	2009	2010
Total Gift	\$836.00	\$120.00
# of Employees	19	21
# of Givers	6	2
% Participation	31.6%	9.5%
Per Capita Gift	\$44.00	\$5.71
# of Leadership Givers	1	0

Results by Paycode (continued)

DEPARTMENT OF REVENUE

Department of Revenue

	2009	2010
Total Gift	\$4,309.40	\$5,168.42
# of Employees	16	21
# of Givers	29	18
% Participation	181.3%	85.7%
Per Capita Gift	\$269.34	\$246.12
# of Leadership Givers	4	1

Office of Income Taxation

	2009	2010
Total Gift	\$2,016.00	\$4,085.45
# of Employees	120	135
# of Givers	16	32
% Participation	13.3%	23.7%
Per Capita Gift	\$16.80	\$30.26
# of Leadership Givers	1	3

Office of Property Valuation

	2009	2010
Total Gift	\$3,723.00	\$2,924.00
# of Employees	69	86
# of Givers	17	18
% Participation	24.6%	20.9%
Per Capita Gift	\$53.96	\$34.00
# of Leadership Givers	3	2

DEPT. FOR FACILITIES & SUPPORT SERVICES

Department for Facilities and Support Services

	2009	2010
Total Gift	\$1,685.52	\$12,353.77
# of Employees	10	12
# of Givers	4	12
% Participation	40.0%	100.0%
Per Capita Gift	\$168.55	\$1,029.48
# of Leadership Givers	2	0

Office of Facility Development and Efficiency

	2009	2010
Total Gift	\$4,584.00	\$3,120.00
# of Employees	48	51
# of Givers	29	18
% Participation	60.4%	35.3%
Per Capita Gift	\$95.50	\$61.18
# of Leadership Givers	1	0

Office of Field Operations

	2009	2010
Total Gift	\$6,876.00	\$7,088.00
# of Employees	169	203
# of Givers	43	44
% Participation	25.4%	21.7%
Per Capita Gift	\$40.69	\$34.92
# of Leadership Givers	8	2

Office of Processing and Enforcement

	2009	2010
Total Gift	\$13,054.00	\$9,491.15
# of Employees	368	401
# of Givers	99	103
% Participation	26.9%	25.7%
Per Capita Gift	\$35.47	\$23.67
# of Leadership Givers	12	1

Office of Sales & Excise Tax

	2009	2010
Total Gift	\$1,846.00	\$2,061.00
# of Employees	86	97
# of Givers	17	18
% Participation	19.8%	18.6%
Per Capita Gift	\$21.47	\$21.25
# of Leadership Givers	0	1

Office of Building and Mechanical Services

	2009	2010
Total Gift	\$3,208.84	\$1,656.00
# of Employees	199	197
# of Givers	20	11
% Participation	10.1%	5.6%
Per Capita Gift	\$16.12	\$8.41
# of Leadership Givers	4	0

Division of Historic Properties

	2009	2010
Total Gift	\$480.00	\$480.00
# of Employees	2	5
# of Givers	1	1
% Participation	50.0%	20.0%
Per Capita Gift	\$240.00	\$96.00
# of Leadership Givers	1	1

Results by Paycode (continued)

DEPT. FOR FACILITIES & SUPPORT SERVICES (CONTINUED)

Division of Real Properties

	2009	2010
Total Gift	\$1,155.60	\$314.00
# of Employees	16	19
# of Givers	6	3
% Participation	37.5%	15.8%
Per Capita Gift	\$72.23	\$16.53
# of Leadership Givers	1	0

Division of Surplus Properties

	2009	2010
Total Gift	\$77.00	\$24.00
# of Employees	10	11
# of Givers	2	1
% Participation	20.0%	9.1%
Per Capita Gift	\$7.70	\$2.18
# of Leadership Givers	0	0

39785-99

	2009	2010
Total Gift	\$0.00	\$0.00
# of Employees	15	30
# of Givers	0	0
% Participation	0.0%	0.0%
Per Capita Gift	\$0.00	\$0.00
# of Leadership Givers	0	0



KY HIGHER EDUCATION ASSISTANCE AUTHORITY

KY Higher Education Assistance Authority

	2009	2010
Total Gift	\$72.00	\$144.00
# of Employees	23	23
# of Givers	1	2
% Participation	4.3%	8.7%
Per Capita Gift	\$3.13	\$6.26
# of Leadership Givers	0	0

Division of Financial Affairs

	2009	2010
Total Gift	\$216.00	\$37.00
# of Employees	17	17
# of Givers	2	1
% Participation	11.8%	5.9%
Per Capita Gift	\$12.71	\$2.18
# of Leadership Givers	0	0

Division of Information Resources & Technology

	2009	2010
Total Gift	\$0.00	\$0.00
# of Employees	2	2
# of Givers	0	0
% Participation	0.0%	0.0%
Per Capita Gift	\$0.00	\$0.00
# of Leadership Givers	0	0

Office of KY's Affordable Prepaid Tuition

	2009	2010
Total Gift	\$72.00	\$72.00
# of Employees	2	2
# of Givers	1	1
% Participation	50.0%	50.0%
Per Capita Gift	\$36.00	\$36.00
# of Leadership Givers	0	0

Division of Legal Services

	2009	2010
Total Gift	\$0.00	\$0.00
# of Employees	8	7
# of Givers	0	0
% Participation	0.0%	0.0%
Per Capita Gift	\$0.00	\$0.00
# of Leadership Givers	0	0

Division of Loan Policy Services

	2009	2010
Total Gift	\$720.00	\$1,080.00
# of Employees	10	9
# of Givers	1	1
% Participation	10.0%	11.1%
Per Capita Gift	\$72.00	\$120.00
# of Leadership Givers	1	1

Division of Loan Program Administration

	2009	2010
Total Gift	\$144.00	\$149.00
# of Employees	25	22
# of Givers	2	3
% Participation	8.0%	13.6%
Per Capita Gift	\$5.76	\$6.77
# of Leadership Givers	0	0

Division of Student & Administrative Services

	2009	2010
Total Gift	\$144.00	\$144.00
# of Employees	4	3
# of Givers	1	1
% Participation	25.0%	33.3%
Per Capita Gift	\$36.00	\$48.00
# of Leadership Givers	0	0

Results by Paycode (continued)

COMMONWEALTH OFFICE OF TECHNOLOGY

Commonwealth Office of Technology

	2009	2010
Total Gift	\$1,724.00	\$984.00
# of Employees	6	8
# of Givers	10	3
% Participation	166.7%	37.5%
Per Capita Gift	\$287.33	\$123.00
# of Leadership Givers	1	0

Office of Consulting & Project Management

	2009	2010
Total Gift	\$8,210.00	\$2,476.00
# of Employees	82	82
# of Givers	31	9
% Participation	37.8%	11.0%
Per Capita Gift	\$100.12	\$30.20
# of Leadership Givers	6	0

Office of Infrastructure Services

	2009	2010
Total Gift	\$7,670.00	\$3,209.00
# of Employees	243	253
# of Givers	55	26
% Participation	22.6%	10.3%
Per Capita Gift	\$31.56	\$12.68
# of Leadership Givers	2	0

OFFICE OF THE PVA'S

Office of the PVA's

	2009	2010
Total Gift	\$9,850.00	\$9,293.00
# of Employees	787	799
# of Givers	73	75
% Participation	9.3%	9.4%
Per Capita Gift	\$12.52	\$11.63
# of Leadership Givers	5	3

MISCELLANEOUS

KY River Authority

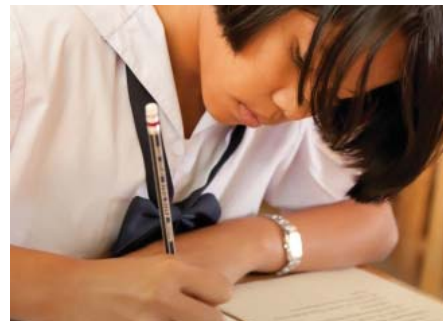
	2009	2010
Total Gift	\$456.00	\$0.00
# of Employees	9	9
# of Givers	3	0
% Participation	33.3%	0.0%
Per Capita Gift	\$50.67	\$0.00
# of Leadership Givers	0	0

Office of Chief Information Security Officer

	2009	2010
Total Gift	\$0.00	\$72.00
# of Employees	12	11
# of Givers	0	1
% Participation	0.0%	9.1%
Per Capita Gift	\$0.00	\$6.55
# of Leadership Givers	0	0

Office of Enterprise Technology

	2009	2010
Total Gift	\$2,798.00	\$1,344.00
# of Employees	17	16
# of Givers	8	3
% Participation	47.1%	18.8%
Per Capita Gift	\$164.59	\$84.00
# of Leadership Givers	2	1



KY Teachers Retirement System

	2009*	2010
Total Gift	\$0.00	\$3,024.00
# of Employees	87	88
# of Givers	0	11
% Participation	0.0%	12.5%
Per Capita Gift	\$0.00	\$34.36
# of Leadership Givers	0	0

* 2009 pledge forms not turned in, verbal reports state \$5,160 raised from 21 givers, resulting in a 24.1% participation rate and a \$59.31 per capita gift. These amounts do not appear in cabinet summary data.

Results by Paycode (continued)

CLERKS & SHERIFFS

Boone County Clerks

	2009	2010
Total Gift	\$0.00	\$0.00
# of Employees	35	35
# of Givers	0	0
% Participation	0.0%	0.0%
Per Capita Gift	\$0.00	\$0.00
# of Leadership Givers	0	0

Boone County Sheriffs

	2009	2010
Total Gift	\$0.00	\$0.00
# of Employees	157	154
# of Givers	0	0
% Participation	0.0%	0.0%
Per Capita Gift	\$0.00	\$0.00
# of Leadership Givers	0	0

Campbell County Clerks

	2009	2010
Total Gift	\$144.00	\$0.00
# of Employees	24	26
# of Givers	2	0
% Participation	8.3%	0.0%
Per Capita Gift	\$6.00	\$0.00
# of Leadership Givers	0	0

Campbell County Sheriffs

	2009	2010
Total Gift	\$0.00	\$0.00
# of Employees	29	29
# of Givers	0	0
% Participation	0.0%	0.0%
Per Capita Gift	\$0.00	\$0.00
# of Leadership Givers	0	0

Christian County Clerks

	2009	2010
Total Gift	\$1,776.00	\$1,800.00
# of Employees	23	24
# of Givers	11	12
% Participation	47.8%	50.0%
Per Capita Gift	\$77.22	\$75.00
# of Leadership Givers	1	0

Christian County Sheriffs

	2009	2010
Total Gift	\$1,032.00	\$1,848.00
# of Employees	46	45
# of Givers	6	16
% Participation	13.0%	35.6%
Per Capita Gift	\$22.43	\$41.07
# of Leadership Givers	0	0

Daviess County Clerks

	2009	2010
Total Gift	\$0.00	\$0.00
# of Employees	26	27
# of Givers	0	0
% Participation	0.0%	0.0%
Per Capita Gift	\$0.00	\$0.00
# of Leadership Givers	0	0

Daviess County Sheriffs

	2009	2010
Total Gift	\$0.00	\$0.00
# of Employees	74	73
# of Givers	0	0
% Participation	0.0%	0.0%
Per Capita Gift	\$0.00	\$0.00
# of Leadership Givers	0	0

Fayette County Clerks

	2009	2010
Total Gift	\$6,291.00	\$5,967.00
# of Employees	78	79
# of Givers	57	53
% Participation	73.1%	67.1%
Per Capita Gift	\$80.65	\$75.53
# of Leadership Givers	0	0

Fayette County Sheriffs

	2009	2010
Total Gift	\$0.00	\$0.00
# of Employees	86	85
# of Givers	0	0
% Participation	0.0%	0.0%
Per Capita Gift	\$0.00	\$0.00
# of Leadership Givers	0	0

Hardin County Clerks

	2009	2010
Total Gift	\$0.00	\$0.00
# of Employees	34	36
# of Givers	0	0
% Participation	0.0%	0.0%
Per Capita Gift	\$0.00	\$0.00
# of Leadership Givers	0	0

Hardin County Sheriffs

	2009	2010
Total Gift	\$264.00	\$528.00
# of Employees	43	44
# of Givers	3	6
% Participation	7.0%	13.6%
Per Capita Gift	\$6.14	\$12.00
# of Leadership Givers	0	0

Results by Paycode (continued)

CLERKS & SHERIFFS (CONTINUED)

Jefferson County Clerks

	2009	2010
Total Gift	\$10,379.00	\$9,043.00
# of Employees	265	268
# of Givers	108	95
% Participation	40.8%	35.4%
Per Capita Gift	\$39.17	\$33.74
# of Leadership Givers	1	0

Kenton County Clerks

	2009	2010
Total Gift	\$0.00	\$50.00
# of Employees	37	40
# of Givers	0	1
% Participation	0.0%	2.5%
Per Capita Gift	\$0.00	\$1.25
# of Leadership Givers	0	0

Madison County Clerks

	2009	2010
Total Gift	\$0.00	\$0.00
# of Employees	26	21
# of Givers	0	0
% Participation	0.0%	0.0%
Per Capita Gift	\$0.00	\$0.00
# of Leadership Givers	0	0

Pike County Clerks

	2009	2010
Total Gift	\$0.00	\$0.00
# of Employees	24	26
# of Givers	0	0
% Participation	0.0%	0.0%
Per Capita Gift	\$0.00	\$0.00
# of Leadership Givers	0	0

Warren County Clerks

	2009	2010
Total Gift	\$0.00	\$0.00
# of Employees	28	25
# of Givers	0	0
% Participation	0.0%	0.0%
Per Capita Gift	\$0.00	\$0.00
# of Leadership Givers	0	0

Sheriff's Expense Allowance

	2009	2010
Total Gift	\$0.00	\$120.00
# of Employees	119	119
# of Givers	0	1
% Participation	0.0%	0.8%
Per Capita Gift	\$0.00	\$1.01
# of Leadership Givers	0	0

Jefferson County Sheriffs

	2009	2010
Total Gift	\$720.00	\$600.00
# of Employees	282	274
# of Givers	5	3
% Participation	1.8%	1.1%
Per Capita Gift	\$2.55	\$2.19
# of Leadership Givers	0	0

Kenton County Sheriffs

	2009	2010
Total Gift	\$0.00	\$0.00
# of Employees	60	59
# of Givers	0	0
% Participation	0.0%	0.0%
Per Capita Gift	\$0.00	\$0.00
# of Leadership Givers	0	0

Madison County Sheriffs

	2009	2010
Total Gift	\$0.00	\$0.00
# of Employees	36	31
# of Givers	0	0
% Participation	0.0%	0.0%
Per Capita Gift	\$0.00	\$0.00
# of Leadership Givers	0	0

Pike County Sheriffs

	2009	2010
Total Gift	\$0.00	\$0.00
# of Employees	26	36
# of Givers	0	0
% Participation	0.0%	0.0%
Per Capita Gift	\$0.00	\$0.00
# of Leadership Givers	0	0

Warren County Sheriffs

	2009	2010
Total Gift	\$0.00	\$0.00
# of Employees	64	87
# of Givers	0	0
% Participation	0.0%	0.0%
Per Capita Gift	\$0.00	\$0.00
# of Leadership Givers	0	0

Dates

Lead Coordinator Training

KHEAA Building
Wednesday, May 18

Statewide Volunteer Training

Frankfort Convention Center
Wednesday, June 8

Kick-Off Event

July 2011

Coordinator Rally Schedule

Department of Aviation
Bi-Weekly Throughout the Campaign

Mid-Campaign Coordinator Rally

Berry Hill Mansion
Wednesday, September 21

Campaign Finale

Thomas D. Clark Center for KY History
Wednesday, November 2

2011 Campaign Chair

Marcheta Sparrow

Secretary, Tourism, Arts and Heritage Cabinet

Email: marcheta.sparrow@ky.gov

Phone: 502.564.4270

Contacts

Terry Tolan

Campaign Administrator

Kevin Middleton

Director of Member Services

Deby Davis

Administrative Manager

Address: P.O. Box 4653

Louisville, KY 40204

Email: terry.tolan@uwky.org

kevin.middleton@uwky.org

deby.davis@uwky.org

Phone: 502.589.2296

ON THE WEB: WWW.KECC.ORG



Leadership Strategy Checklist

- Make a leadership gift.
- Get personally involved.
- Name an exceptional coordinator.
- Encourage leadership giving by your senior management team.
- Encourage all employees to attend group meetings.
- Ensure that every employee is personally asked to give.
- Set high expectations for your cabinet's goals.
- Recognize your employees - say thanks!

What makes an exceptional Cabinet Coordinator?

They...

- have a passion for the KECC charities
- support the campaign with their own contribution
- have the respect of Cabinet employees
- utilize great time-management skills
- show a strong willingness to participate in the campaign
- demonstrate a caring attitude
- are results-oriented and not afraid to ask for donations
- are visible in the organization
- have the support of the Secretary



The Cabinet Coordinator will:

- select volunteers from various departments, agencies, and remote offices to assist them in the campaign
- attend the full day training & kickoff in Frankfort
- attend bi-weekly report meetings, less than one hour long
- schedule KECC group meetings for cabinet employees to learn more about their giving options
- along with this network of volunteers, promote KECC throughout your entire cabinet
- look to you for support of KECC and the volunteer group's efforts during the campaign



KECC

Kentucky Employees Charitable Campaign